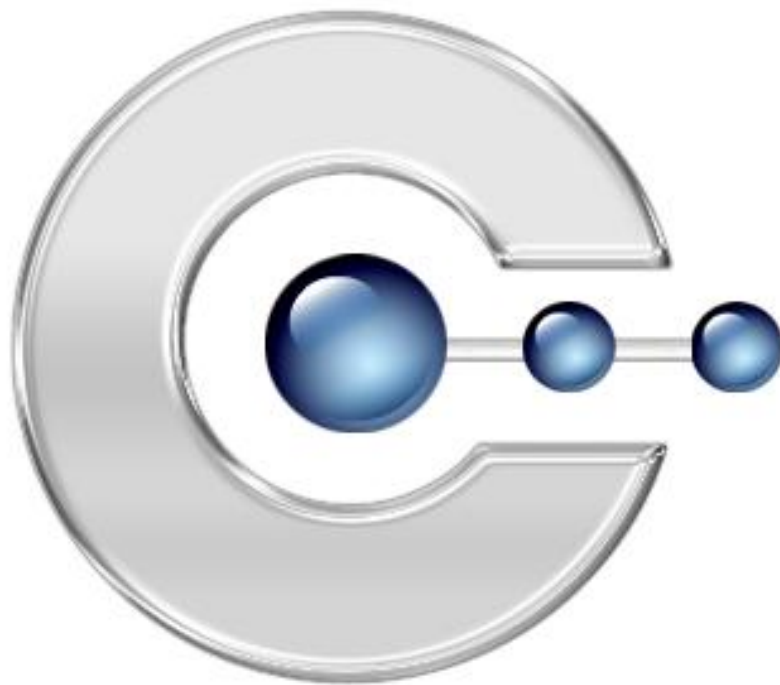


User Manual calcPad PPC 1.5.0



www.calcPad.de

November 2005

Contents

Contents	2
Foreword	3
Installation	4
Preliminary Remarks	4
Installation on the Desktop PC	5
First start of the software after setup.....	8
Program documentation	9
Calculating with calcPad	9
The main screen	10
The menu bar.....	12
Menu File.....	12
Menu Edit	14
Menu NumPad	16
Other menu entries	16
calcPad options	17
Uninstallation of calcPad	18
License agreement	19

Foreword

Dear pocket PC user,

When buying calcPad you chose one of the most innovative software solutions for pocket PC's.

calcPad is more than a calculator. It is the next generation calculator. Calculating was never easier before calcPad.

This manual will lead you through the installation of calcPad and acquaint you with the handling of the program. You will find information on the following topics:

Topic	page
Installation	7
Program documentation Here you will find a detailed description of all functions and set-up possibilities of calcPad.	9
Uninstallation Here you will find information on how to uninstall calcPad.	17

Note: All functions of this software have been tested by many pocket PC users on all kinds of devices. To our knowledge calcPad runs faultlessly on all pocket PC's with ARM-compatible processors (e.g. XScale) needing an installed DOT.NET Compact Framework.

SFR GmbH may not be held liable for any loss of data. Please read the information in the license agreement that will be shown during the installation (it may also be found in this manual).

calcPad was developed for the operating systems Windows Mobile 2002/2003 (SE)/2005. Incompatibilities with other applications are improbable, but they cannot be ruled out entirely. Should you have any problems, please send an e-mail to support@sfr-software.com.

I am confident that you will soon be unable to imagine a pocket PC without calcPad.

I hope you enjoy calcPad!

Winfried Schöttler
- Managing Director SFR GmbH -

Installation

Preliminary Remarks

In order that you may install and use calcPad as easily as possible, our software developers created a convenient installation routine and intuitive software handling. The installation routine will run almost completely software assisted. Only where you have to choose certain options, you will get a message which may be answered with one click.

⇒ The suggested settings have been thoroughly tested, and we recommend that you confirm them.

The software installation of calcPad is effected in two steps, which are described in this manual.

⇒ calcPad cannot be installed on pocket PC's directly. You must install it from your desktop PC by calling up the installation file "calcPadSetupEnglish.exe".

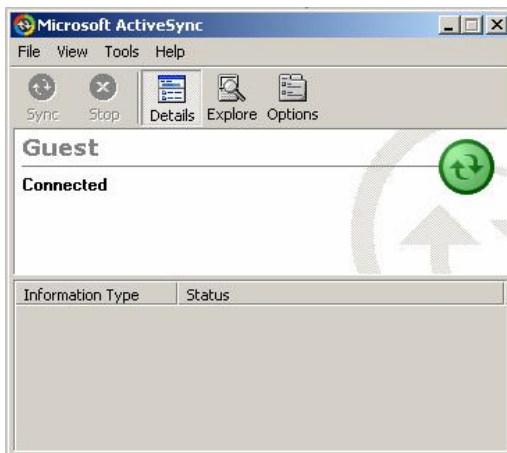
In order to install calcPad a connection between desktop PC and pocket PC must be established.

⇒ Should you have any problems with this connection, please refer to your pocket PC's manual, or ask the manufacturer of your hardware.

The following steps apply to a connection established with the Microsoft software ActiveSync®.

Installation on the Desktop PC

a) ActiveSync-Connection



Establish an "ActiveSync"-connection between your PC and your pocket PC.

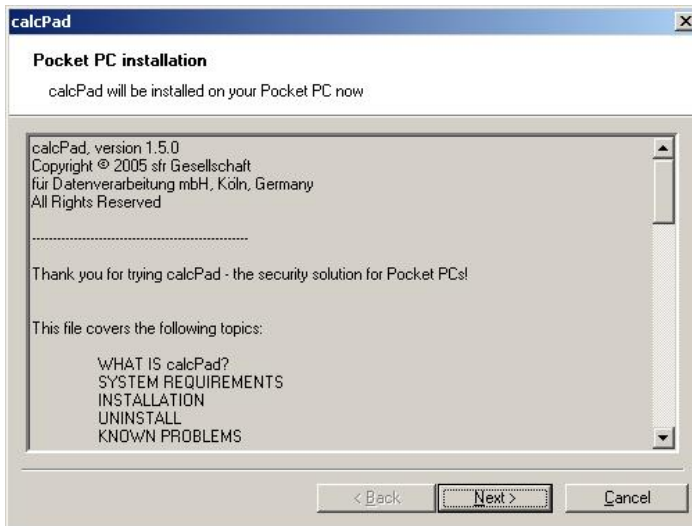
Pay attention to the green control light. It symbolizes an existing connection throughout the installation step 1.

A **gray control light** means that there is no connection. In this case please try to reconnect.

⇒ **Note:** If you cannot establish an "ActiveSync"-connection, restart your PC with the pocket PC still connected.



b) Start Setup File



Start the installation file "calcPadSetupEnglish.exe" from your download directory.

The installation routine will greet you with the "Welcome"-screen.

Please read it and confirm with "Next".

c) Accept License Agreement

Finally you will be shown the license agreement for calcPad.

If you want to install and use calcPad, please accept the terms and press "Install".

(The regulations may also be found in this document)



d) Software Installation

calcPad will now contact your pocket PC's operating system and begin with the actual software installation.

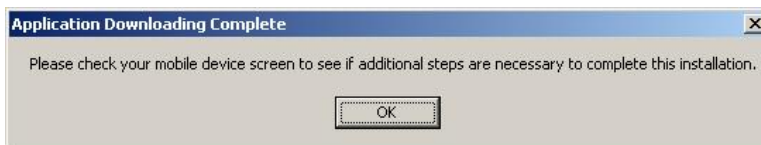
⇒ If you have installed an authentication software other than the standard application of your operating system you will have to uninstall it first.

e) Define Installation Directory

Now you will be asked to define the directory for the installation of calcPad on your pocket PC. Please accept the default directory or selected another directory for installation.

f) Termination of Copying Process

When the copying is completed you will get the following message:



Please confirm with "OK".

The desktop installation process is now complete. You will not need the desktop PC for the further process.

First start of the software after setup



You may find the calcPad software in the programs' area of your pocket PC:

Start -> Programs

On the first start of calcPad you will be asked to register:



Now you must enter your activation key to unlock the software.

You may use the "virtual" keyboard to enter your activation key. It can be found on the right hand side of the menu bar.

Confirm your input by clicking "OK" in the menu bar.

If you made a mistake when entering your customer key, you may correct it and repeat the check with "OK".

Press "Trial version" to test calcPad for 30 days without any restrictions.

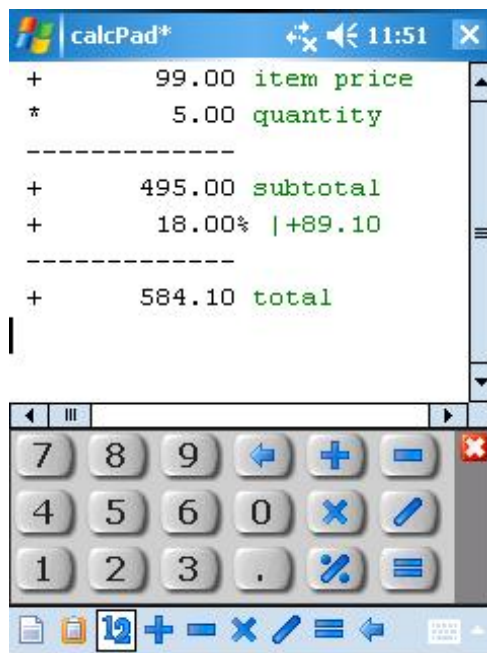
Program documentation

Calculating with calcPad

Calculating with calcPad is as easy as using a standard calculator. You will automatically use calcPad as intended.

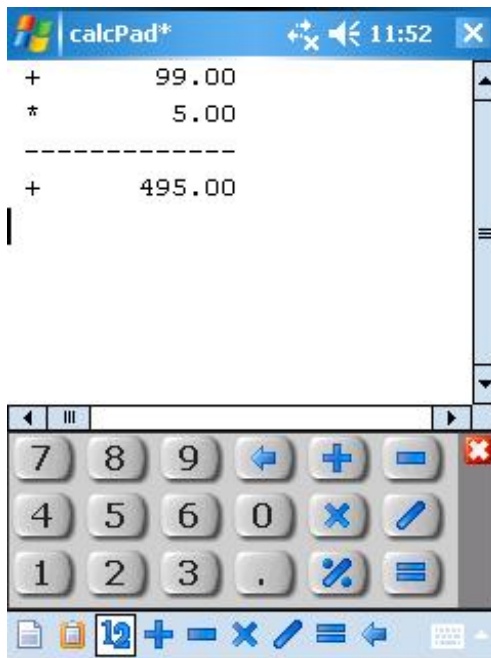
You can use your fingers to type in your calculations with the number pad. It's no problem, if you made an input mistake. You can correct **anything** later.

calcPad is more than a calculator:



- Enter many calculation terms in one turn and still keep an overview.
- Use intermediate results to check and structure your calculation.
- Comment your calculation terms, to give sense and context to it.
- Enter „normal“ text for extended comment on your calculation.
- Change any term afterwards and calcPad will refresh the whole calculation automatically.
- Save your calculations into files. Open the files later and you can change the calculations. calcPad will refresh the whole calculation automatically again and again.
- Use your existing calcPad files as templates. Only adjust some of your calculation terms and the new result is displayed immediately.

The main screen



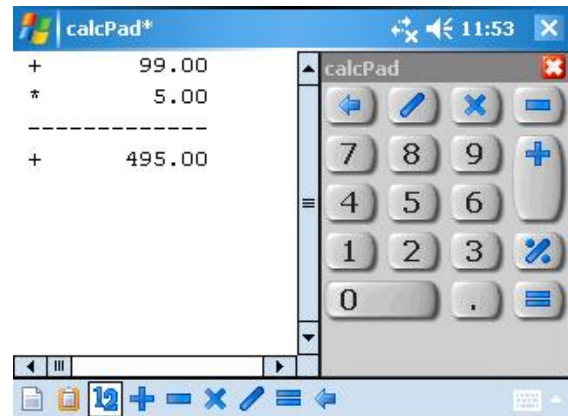
After starting calcPad you come to the main screen of the program.

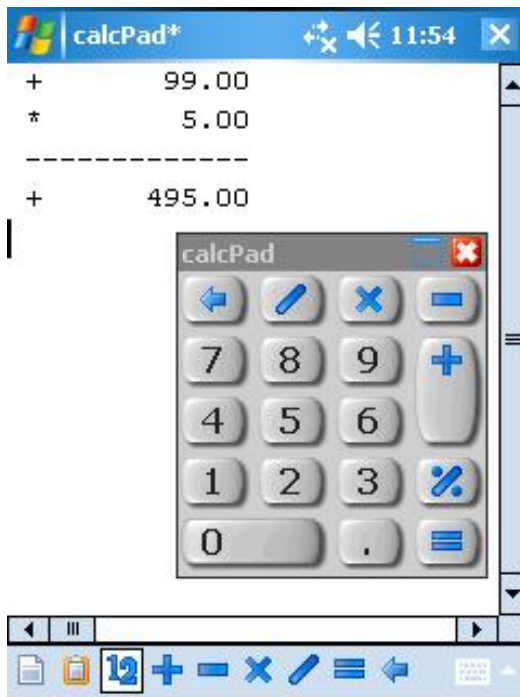
Enter your calculations in the big text field using the number pad just like you did on your standard calculator.

Enter some comments beside the terms, if you want to.

For entering your calculations calcPad offers different number pads.

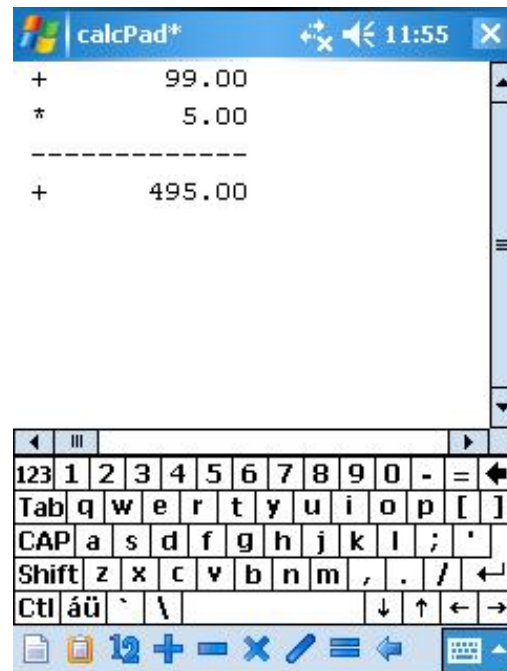
You can choose your preferred number pad according to the display mode (portrait, landscape).





The number pads are designed and optimized for usage with your fingers.

You can also use the standard virtual keyboard or the handwriting recognition of your pocket PC, if you want to.



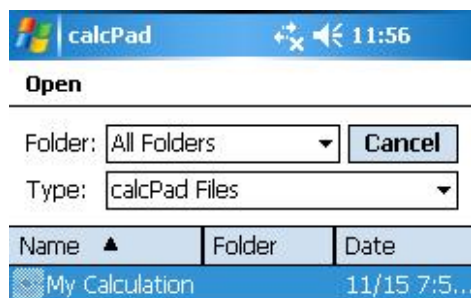
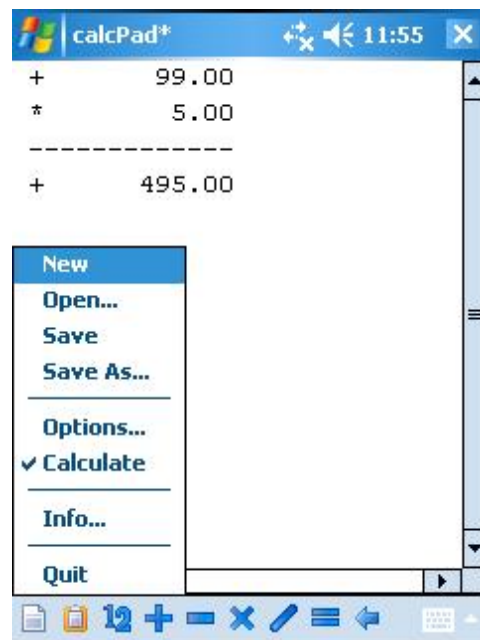
The menu bar

You can access all extended functions and the options (settings) of calcPad in the menu bar or the context menu.

Menu File

This menu contains all file specific functions, like „new document“, „open document“ and „save document“.

The options are described in the following chapter of this manual.

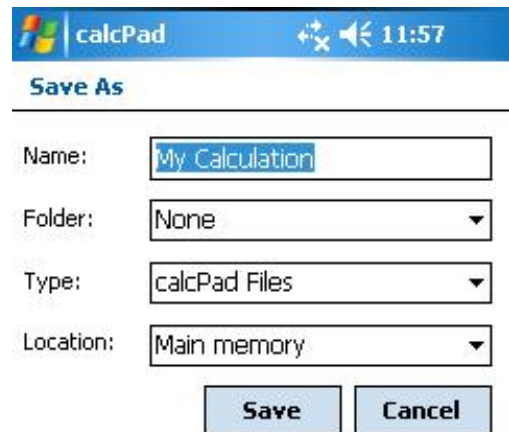


With „new“ you can create a new empty document.

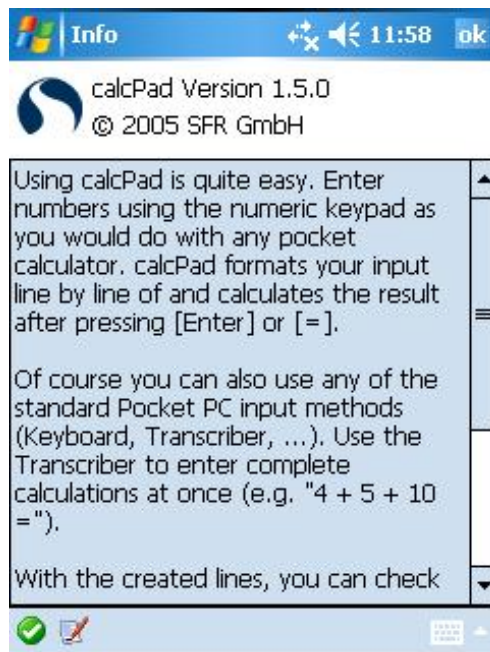
“Open” an existing calcPad file to view its contents or to change the calculations in it.



You can save your calculations in a calcPad file to use it again later.



Choosing the menu item „Info“ leads you to the info screen. You can see the program version there and a short introduction to calcPad.



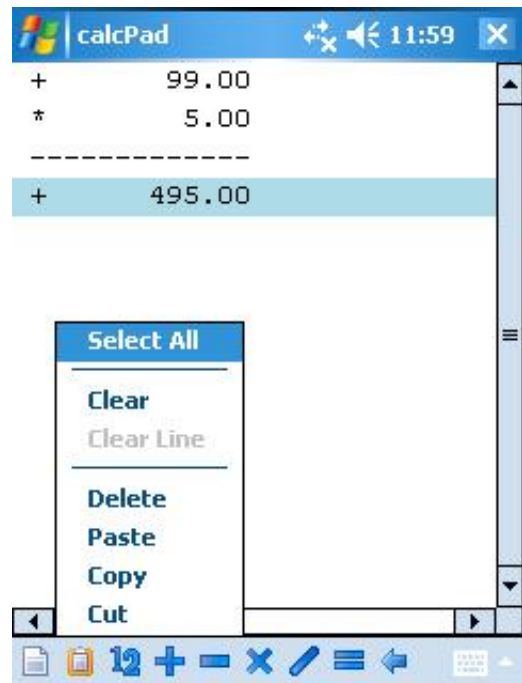
Choose „quit“ to close calcPad. Pressing the “X” symbol in the upper right corner only minimizes calcPad.

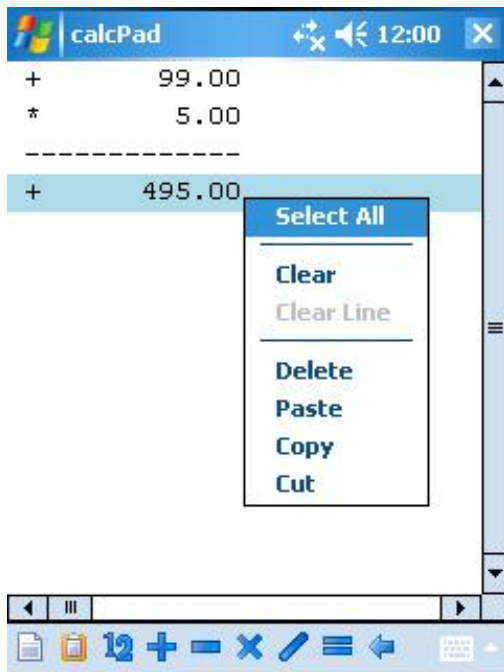
If calcPad is only minimized you can start it directly from your today screen.



Menu Edit

This menu contains all extended text functions, like the clipboard.

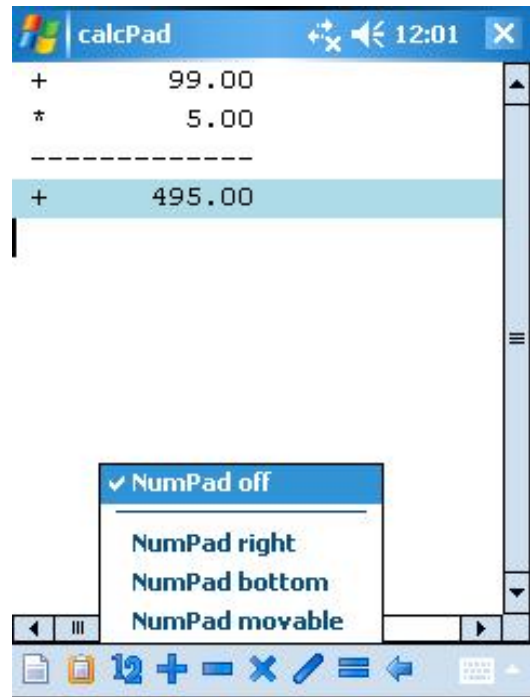




All functions of this menu can also easily reached by context menu (just tap and hold the pen for a while) in the text field.

Menu NumPad

In this menu you can switch between the different number pads, that calcPad offers.



Other menu entries

Beside the already discussed menu entries there are some more menu buttons showing calculation operators.

Use these menu buttons to enter calculation operators, when using the handwriting recognition mode.

Some handwriting recognition programs have problems to recognize calculation operators.



calcPad options

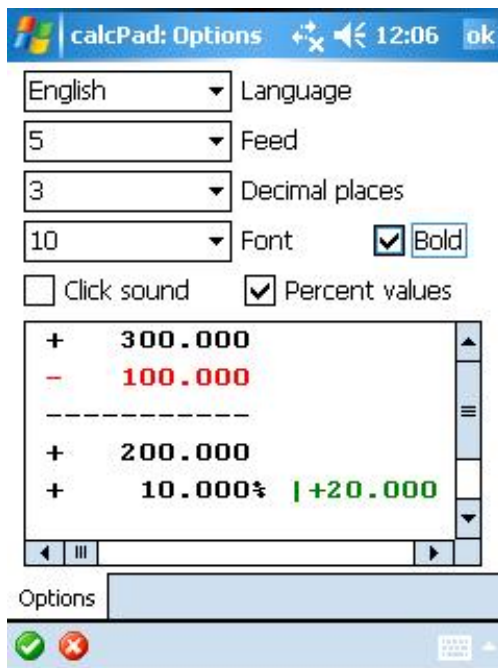
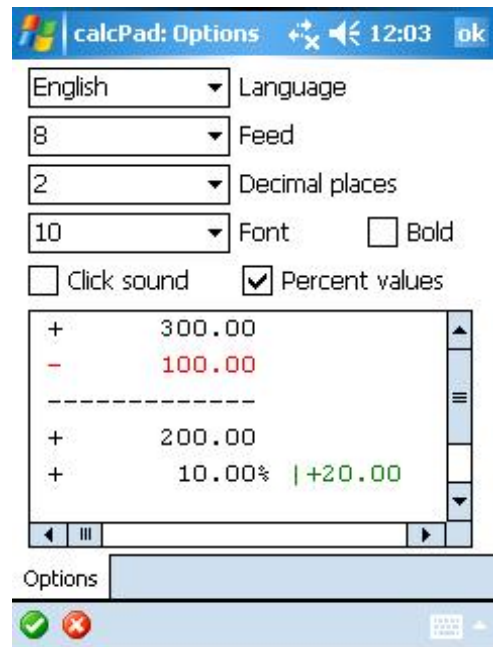
In the "options" of calcPad you may adjust the text field of calcPad to your needs.

Change the language of the user interface of calcPad here.

Further setting cover the formatting of your calculations in calcPad.

You can change the feed (distance between calculation symbol and number) and set the number of decimal places.

You can change the font size and activate bold font.



Click sound activates a sound that plays when tapping the buttons in the different number pads of calcPad.

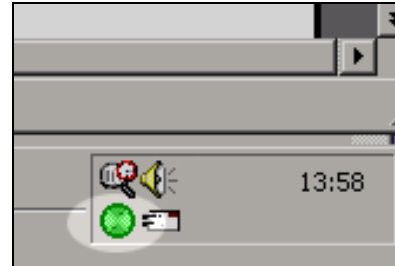
You can even use your own click sound. Just replace the sound file in the calcPad folder!

The setting Percent Values shows the calculated value of a percent line in your calculation as a comment.

Changes of the format settings are visible in the preview window below, immediately.

Uninstallation of calcPad

If you want to uninstall calcPad you should do this analog to the installation process using an ActiveSync® interface.



Start the ActiveSync software with a double click on the symbol in the task bar.

Call up the option "Add/Remove Programs..." in the menu "Tools".

Deactivate the control box beside the entry "sfr GmbH calcPad" by clicking on the checkbox to delete it.

Click on "Remove" to start the uninstall process.

If you are sure you want to remove calcPad confirm the following message with "OK".

calcPad will now be deleted completely from your pocket PC. If you want to use calcPad later on, you will have to reinstall the software as described in the chapter "Installation".

License agreement

calcPad

Version 1.5.0

Copyright © 2005 SFR Gesellschaft für Datenverarbeitung mbH, Cologne, Germany, All Rights Reserved

Please read the following terms and conditions before using calcPad. In the event that you use this software, you are agreeing to be bound by the terms and conditions of this agreement. Should you not agree with these terms, do not use calcPad.

A single user license permits the use of calcPad on a single computer. Multiple user licenses will be subject to the terms and conditions granted in such license.

COPYRIGHT

The software calcPad and the documentation are owned by SFR and are protected by copyright laws and international treaty provisions. No title to intellectual property is being transferred. You may not modify, reverse engineer, decompile or disassemble the software. You may not translate, reverse engineer, decompile, disassemble, modify or patch the calcPad executable files or documentation in any way.

LIMITED WARRANTY

SFR warrants that the program will perform in substantial compliance with the documentation supplied with the software product. If a significant defect in the product is found, the Purchaser may return the product for a refund. In no event will such a refund exceed the purchase price of the product.

Limitation of Liability: EXCEPT AS PROVIDED ABOVE, YOU AGREE THAT SFR SHALL NOT BE LIABLE, UNDER ANY LEGAL THEORY, INCLUDING TORT, CONTRACT OR OTHERWISE, FOR ANY DAMAGES INCURRED BY YOU INCLUDING BUT NOT LIMITED TO DIRECT OR INDIRECT DAMAGES FOR LOSS OF GOODWILL, LOSS OF DATA, BUSINESS PROFITS, BUSINESS INTERRUPTION, LOSS OF BUSINESS INFORMATION OR OTHER COMMERCIAL OR PECUNIARY LOSS, ANY CONSEQUENTIAL, SPECIAL OR INCIDENTAL

DAMAGE) OR ANY OTHER PERSON OR ENTITY AS A RESULT OF YOUR USE OR INABILITY TO USE THE SOFTWARE OR DOCUMENTATION EVEN IF SFR HAS BEEN ADVISED OF THE POSSIBILITY OF SUCH DAMAGES. SOME JURISDICTIONS DO NOT ALLOW THE EXCLUSION OR LIMITATION OF INCIDENTAL OR CONSEQUENTIAL DAMAGES, SO THIS LIMITATION MAY NOT APPLY TO YOU.

GENERAL

This Agreement is the entire agreement between SFR and you, supersedes any other agreements or discussions, oral or written, and may not be changed except by written amendment signed by the author of this product. This Agreement shall be governed by and construed in accordance with the laws of Federal Republic of Germany, excluding its conflict of laws, rules and the United Nations Convention on Contracts for the International Sale of Goods. If any provision of this Agreement is declared by a court of competent jurisdiction to be invalid, illegal or unenforceable, such provision shall be severed from this Agreement and the other provisions shall remain in full force and effect.

Should you have any questions concerning this license agreement, or if you desire to contact SFR for any reason please mail at support@sfr-software.com.

Windows®, ActiveSync®, Windows Mobile 2002/2003/2005® are registered trade marks of the Microsoft Corporation.